



Location: CMA1b - Oil St Community Liaison Centre

Report on 24-hour TSP monitoring

Action Level ( $\mu\text{g}/\text{m}^3$ ) - 176.7

Limit Level ( $\mu\text{g}/\text{m}^3$ ) - 260

Date	Sampling Time	Weather Condition	Filter paper no.	Filter Weight, g		Elapse Time, hr		Sampling Time, hr	Flow Rate, $\text{m}^3/\text{min}$			Total Volume, $\text{m}^3$	TSP Level, $\mu\text{g}/\text{m}^3$
				Initial	Final	Initial	Final		Initial, $Q_{si}$	Final, $Q_{sf}$	Average		
30-Apr-12	8:00	Cloudy	002494	2.7612	2.8830	915.34	939.34	24.00	1.04	0.95	1.00	1437	85
2-May-12	8:00	Cloudy	002492	2.7220	2.8412	939.34	963.34	24.00	1.09	1.04	1.07	1535	78
9-May-12	8:00	Sunny	002772	2.8114	2.8998	969.48	993.48	24.00	1.09	1.09	1.09	1570	56
14-May-12	8:00	Sunny	002791	2.7703	2.8632	993.48	1017.48	24.00	1.14	1.14	1.14	1637	57
19-May-12	8:00	Cloudy	002842	2.7807	2.9469	1040.77	1064.77	24.00	1.14	1.14	1.14	1640	101
25-May-12	8:00	Cloudy	002910	2.7735	2.9336	1067.77	1091.77	24.00	1.14	1.14	1.14	1638	98

\* Due to lack of electricity supply, the 24 hr-TSP was rescheduled from 8 May 2012 to 9 May 2012

Report on 1-hour TSP monitoring

Action Level ( $\mu\text{g}/\text{m}^3$ ) - 320.1

Limit Level ( $\mu\text{g}/\text{m}^3$ ) - 500

Date	Sampling Time	Weather Condition	Filter paper no.	Filter Weight, g		Elapse Time, hr		Sampling Time, hr	Flow Rate, $\text{m}^3/\text{min}$			Total Volume, $\text{m}^3$	TSP Level, $\mu\text{g}/\text{m}^3$
				Initial	Final	Initial	Final		Initial, $Q_{si}$	Final, $Q_{sf}$	Average		
3-May-12	13:00	Cloudy	002586	2.7377	2.7459	963.34	964.47	1.13	1.13	1.13	1.13	77	107
3-May-12	14:25	Cloudy	002674	2.7720	2.7826	964.47	965.47	1.00	1.04	1.04	1.04	63	169
3-May-12	15:30	Cloudy	002675	2.7923	2.8007	965.47	966.48	1.01	1.04	1.09	1.07	65	130
9-May-12	9:30	Sunny	002676	2.7832	2.8045	966.48	967.48	1.00	1.09	1.14	1.11	67	319
9-May-12	10:40	Sunny	002317	2.7808	2.7898	967.48	968.48	1.00	1.09	1.14	1.11	67	135
9-May-12	13:00	Sunny	002393	2.8022	2.8114	968.48	969.48	1.00	1.09	1.14	1.11	67	138
15-May-12	8:23	Cloudy	002811	2.7361	2.7441	1017.48	1018.48	1.00	1.09	1.09	1.09	65	122
15-May-12	9:35	Cloudy	002848	2.7758	2.7815	1018.48	1019.48	1.00	1.14	1.09	1.11	67	85
15-May-12	11:00	Cloudy	002843	2.7973	2.8031	1019.48	1020.48	1.00	1.14	1.11	1.13	68	86
21-May-12	10:00	Cloudy	002421	2.7348	2.7432	1064.77	1065.77	1.00	1.09	1.00	1.05	63	134
21-May-12	15:00	Cloudy	002892	2.7795	2.7867	1065.77	1066.77	1.00	1.00	1.14	1.07	64	112
21-May-12	16:25	Cloudy	002915	2.7832	2.7958	1066.77	1067.77	1.00	1.19	1.14	1.16	70	181
26-May-12	8:28	Cloudy	002905	2.7894	2.7998	1091.77	1092.77	1.00	1.11	1.09	1.10	66	157
26-May-12	9:33	Cloudy	002903	2.7809	2.7921	1092.77	1093.77	1.00	1.09	1.05	1.07	64	175
26-May-12	10:45	Cloudy	002591	2.7402	2.7536	1093.77	1094.77	1.00	1.18	1.09	1.14	68	196

Location: CMA2a - Causeway Bay Community Centre

Report on 24-hour TSP monitoring  
Action Level ( $\mu\text{g}/\text{m}^3$ ) - 169.5  
Limit Level ( $\mu\text{g}/\text{m}^3$ ) - 260

Date	Sampling Time	Weather Condition	Filter paper no.	Filter Weight, g		Elapse Time, hr		Sampling Time, hr	Flow Rate, $\text{m}^3/\text{min}$			Total Volume, $\text{m}^3$	TSP Level, $\mu\text{g}/\text{m}^3$
				Initial	Final	Initial	Final		Initial, $Q_{si}$	Final, $Q_{sf}$	Average		
2-May-12	8:00	Cloudy	002493	2.7242	2.8822	10684.32	10708.32	24.00	1.42	1.42	1.42	2045	77
8-May-12	8:00	Sunny	002325	2.7848	2.9039	10711.32	10735.32	24.00	1.42	1.40	1.41	2030	59
14-May-12	8:00	Cloudy	002792	2.7606	2.8902	10738.32	10762.32	24.00	1.40	1.40	1.40	2015	64
19-May-12	8:00	Cloudy	002844	2.7920	2.8840	10765.32	10789.32	24.00	1.40	1.40	1.40	2017	46
25-May-12	8:00	Cloudy	002891	2.7746	2.8891	10792.32	10816.32	24.00	1.40	1.40	1.40	2016	57

Report on 1-hour TSP monitoring  
Action Level ( $\mu\text{g}/\text{m}^3$ ) - 323.4  
Limit Level ( $\mu\text{g}/\text{m}^3$ ) - 500

Date	Sampling Time	Weather Condition	Filter paper no.	Filter Weight, g		Elapse Time, hr		Sampling Time, hr	Flow Rate, $\text{m}^3/\text{min}$			Total Volume, $\text{m}^3$	TSP Level, $\mu\text{g}/\text{m}^3$
				Initial	Final	Initial	Final		Initial, $Q_{si}$	Final, $Q_{sf}$	Average		
3-May-12	8:51	Cloudy	002490	2.7671	2.7816	10708.32	10709.32	1.00	1.40	1.42	1.41	85	172
3-May-12	9:50	Cloudy	002488	2.7397	2.7566	10709.32	10710.32	1.00	1.37	1.40	1.39	83	203
3-May-12	11:00	Cloudy	002486	2.7167	2.7325	10710.32	10711.32	1.00	1.42	1.42	1.42	85	185
9-May-12	9:15	Sunny	002319	2.8073	2.8178	10735.32	10736.32	1.00	1.38	1.35	1.36	82	128
9-May-12	10:20	Sunny	002318	2.8132	2.8242	10736.32	10737.32	1.00	1.35	1.40	1.38	83	133
9-May-12	13:00	Sunny	002316	2.7946	2.8018	10737.32	10738.32	1.00	1.42	1.42	1.42	85	84
15-May-12	8:19	Cloudy	002812	2.7393	2.7509	10762.32	10763.32	1.00	1.35	1.35	1.35	81	143
15-May-12	9:30	Cloudy	002849	2.7615	2.7686	10763.32	10764.32	1.00	1.40	1.40	1.40	84	85
15-May-12	10:50	Cloudy	002845	2.7920	2.7948	10764.32	10765.32	1.00	1.38	1.35	1.37	82	34
21-May-12	9:40	Cloudy	002420	2.7463	2.7507	10789.32	10790.32	1.00	1.36	1.38	1.37	82	54
21-May-12	15:30	Cloudy	002834	2.7911	2.7992	10790.32	10791.32	1.00	1.31	1.33	1.32	79	102
21-May-12	16:25	Cloudy	002916	2.7771	2.7854	10791.32	10792.32	1.00	1.43	1.43	1.43	86	97
26-May-12	8:18	Cloudy	002966	2.7605	2.7698	10816.32	10817.32	1.00	1.40	1.40	1.40	84	111
26-May-12	9:20	Cloudy	002904	2.7742	2.7833	10817.32	10818.32	1.00	1.40	1.40	1.40	84	108
26-May-12	10:30	Cloudy	002902	2.7891	2.8037	10818.32	10819.32	1.00	1.40	1.40	1.40	84	174



Location: CMA3a - CWB PRE Site Office Area

Report on 24-hour TSP monitoring  
 Action Level ( $\mu\text{g}/\text{m}^3$ ) - 171  
 Limit Level ( $\mu\text{g}/\text{m}^3$ ) - 260

Date	Sampling Time	Weather Condition	Filter paper no.	Filter Weight, g		Elapse Time, hr		Sampling Time, hr	Flow Rate, $\text{m}^3/\text{min}$			Total Volume, $\text{m}^3$	TSP Level, $\mu\text{g}/\text{m}^3$
				Initial	Final	Initial	Final		Initial, $Q_{si}$	Final, $Q_{sf}$	Average		
2-May-12	8:00	Cloudy	002714	2.7910	2.9350	11378.96	11402.85	23.89	1.56	1.56	1.56	2234	64
8-May-12	8:00	Sunny	002711	2.7855	2.8733	11405.85	11429.85	24.00	1.51	1.51	1.51	2178	40
14-May-12	8:00	Cloudy	002576	2.7286	2.8199	11433.85	11457.85	24.00	1.51	1.51	1.51	2179	42
19-May-12	8:00	Cloudy	002728	2.8088	2.9303	11460.85	11484.85	24.00	1.49	1.49	1.49	2147	57
25-May-12	8:00	Cloudy	002722	2.8075	3.1862	11487.85	11511.85	24.00	1.56	1.56	1.56	2248	168

Report on 1-hour TSP monitoring  
 Action Level ( $\mu\text{g}/\text{m}^3$ ) - 311.3  
 Limit Level ( $\mu\text{g}/\text{m}^3$ ) - 500

Date	Sampling Time	Weather Condition	Filter paper no.	Filter Weight, g		Elapse Time, hr		Sampling Time, hr	Flow Rate, $\text{m}^3/\text{min}$			Total Volume, $\text{m}^3$	TSP Level, $\mu\text{g}/\text{m}^3$
				Initial	Final	Initial	Final		Initial, $Q_{si}$	Final, $Q_{sf}$	Average		
3-May-12	9:56	Cloudy	002581	2.7454	2.7575	11402.85	11403.85	1.00	1.46	1.46	1.46	88	138
3-May-12	13:35	Cloudy	002710	2.8015	2.8117	11403.85	11404.85	1.00	1.49	1.49	1.49	89	114
3-May-12	14:50	Cloudy	002708	2.7966	2.8102	11404.85	11405.85	1.00	1.53	1.53	1.53	92	148
9-May-12	10:22	Sunny	002428	2.6953	2.7060	11430.85	11431.85	1.00	1.42	1.42	1.42	85	126
9-May-12	11:30	Sunny	002417	2.7297	2.7365	11431.85	11432.85	1.00	1.46	1.46	1.46	88	77
9-May-12	13:15	Sunny	002632	2.7932	2.8024	11432.85	11433.85	1.00	1.46	1.46	1.46	88	105
15-May-12	13:00	Cloudy	002743	2.7728	2.7808	11457.85	11458.85	1.00	1.49	1.51	1.50	90	89
15-May-12	14:30	Cloudy	002731	2.8140	2.8208	11458.85	11459.85	1.00	1.42	1.49	1.45	87	78
15-May-12	15:32	Cloudy	002730	2.8084	2.8145	11459.85	11460.85	1.00	1.47	1.47	1.47	88	69
21-May-12	8:30	Cloudy	002726	2.8128	2.8273	11484.85	11485.85	1.00	1.54	1.54	1.54	92	157
21-May-12	9:33	Cloudy	002724	2.8093	2.8195	11485.85	11486.85	1.00	1.47	1.47	1.47	88	116
21-May-12	10:42	Cloudy	002705	2.7830	2.7942	11486.85	11487.85	1.00	1.47	1.47	1.47	88	127
26-May-12	10:42	Cloudy	002721	2.7957	2.8162	11511.85	11512.85	1.00	1.54	1.54	1.54	92	222
26-May-12	13:00	Cloudy	002712	2.7806	2.7942	11512.85	11513.85	1.00	1.54	1.54	1.54	92	147
26-May-12	14:02	Cloudy	002715	2.7823	2.7924	11513.85	11514.85	1.00	1.56	1.51	1.54	92	109



Location: CMA4a - SPCA

Report on 24-hour TSP monitoring

Action Level ( $\mu\text{g}/\text{m}^3$ ) - 171.2  
Limit Level ( $\mu\text{g}/\text{m}^3$ ) - 260

Date	Sampling Time	Weather Condition	Filter paper no.	Filter Weight, g		Elapse Time, hr		Sampling Time, hr	Flow Rate, $\text{m}^3/\text{min}$			Total Volume, $\text{m}^3$	TSP Level, $\mu\text{g}/\text{m}^3$
				Initial	Final	Initial	Final		Initial, $Q_{si}$	Final, $Q_{sf}$	Average		
2-May-12	8:00	Cloudy	002690	2.7646	2.8640	14905.10	14929.11	24.01	1.14	1.09	1.11	1601	62
8-May-12	8:00	Sunny	002706	2.7916	2.8497	14932.11	14956.10	23.99	1.11	1.09	1.10	1583	37
14-May-12	8:00	Cloudy	002631	2.8043	2.8667	14959.14	14983.14	24.00	1.04	1.04	1.04	1493	42
19-May-12	8:00	Cloudy	002727	2.8195	2.9018	14986.14	15010.14	24.00	1.04	1.14	1.09	1569	52
25-May-12	8:00	Cloudy	002635	2.7700	2.8833	15013.14	15037.14	24.00	1.14	1.14	1.14	1641	69

Report on 1-hour TSP monitoring

Action Level ( $\mu\text{g}/\text{m}^3$ ) - 312.5  
Limit Level ( $\mu\text{g}/\text{m}^3$ ) - 500

Date	Sampling Time	Weather Condition	Filter paper no.	Filter Weight, g		Elapse Time, hr		Sampling Time, hr	Flow Rate, $\text{m}^3/\text{min}$			Total Volume, $\text{m}^3$	TSP Level, $\mu\text{g}/\text{m}^3$
				Initial	Final	Initial	Final		Initial, $Q_{si}$	Final, $Q_{sf}$	Average		
3-May-12	10:25	Cloudy	002672	2.7696	2.7780	14929.11	14930.11	1.00	1.14	1.09	1.11	67	126
3-May-12	13:45	Cloudy	002709	2.7921	2.8053	14930.11	14931.11	1.00	1.14	1.19	1.16	70	189
3-May-12	15:00	Cloudy	002707	2.7954	2.8061	14931.11	14932.11	1.00	1.14	1.09	1.11	67	160
9-May-12	9:00	Sunny	002681	2.7969	2.8017	14956.11	14957.11	1.00	0.99	0.99	0.99	59	81
9-May-12	10:11	Sunny	002782	2.8111	2.8159	14957.11	14958.11	1.00	1.04	1.09	1.06	64	75
9-May-12	13:00	Sunny	002462	2.7400	2.7445	14958.11	14959.11	1.00	0.93	0.93	0.93	56	80
15-May-12	13:00	Cloudy	002742	2.7620	2.7705	14983.14	14984.14	1.00	0.99	1.09	1.04	62	137
15-May-12	14:40	Cloudy	002733	2.7967	2.8056	14984.14	14985.14	1.00	0.99	1.04	1.01	61	147
15-May-12	15:42	Cloudy	002729	2.8149	2.8245	14985.14	14986.14	1.00	1.09	1.09	1.09	65	147
21-May-12	8:45	Cloudy	002725	2.7920	2.7969	15010.14	15011.14	1.00	1.19	1.22	1.21	72	68
21-May-12	9:48	Cloudy	002704	2.7848	2.7903	15011.14	15012.14	1.00	1.14	1.14	1.14	69	80
21-May-12	10:53	Cloudy	002703	2.7706	2.7763	15012.14	15013.14	1.00	1.14	1.14	1.14	69	83
26-May-12	10:59	Cloudy	002720	2.7975	2.8081	15037.14	15038.14	1.00	1.09	1.14	1.11	67	158
26-May-12	13:15	Cloudy	002719	2.7990	2.8104	15038.14	15039.14	1.00	1.19	1.22	1.20	72	158
26-May-12	14:20	Cloudy	002718	2.7992	2.8087	15039.14	15040.14	1.00	1.19	1.17	1.18	71	134



Location: CMA5a - Children Garden opposite to Pedestrian Plaza

Report on 24-hour TSP monitoring

Action Level ( $\mu\text{g}/\text{m}^3$ ) - 181  
Limit Level ( $\mu\text{g}/\text{m}^3$ ) - 260

Date	Sampling Time	Weather Condition	Filter paper no.	Filter Weight, g		Elapse Time, hr		Sampling Time, hr	Flow Rate, $\text{m}^3/\text{min}$			Total Volume, $\text{m}^3$	TSP Level, $\mu\text{g}/\text{m}^3$
				Initial	Final	Initial	Final		Initial, $Q_{si}$	Final, $Q_{sf}$	Average		
2-May-12	8:00	Cloudy	002806	2.7488	2.9107	15883.47	15907.47	24.00	1.43	1.46	1.45	2084	78
9-May-12	8:00	Sunny	002701	2.7704	2.8686	15916.95	15940.94	23.99	1.13	1.19	1.16	1673	59
14-May-12	8:00	Sunny	002582	2.7600	2.9251	15940.94	15964.94	24.00	1.46	1.46	1.46	2107	78
19-May-12	8:00	Rainy	002788	2.7990	2.9329	15967.94	15991.94	24.00	1.44	1.44	1.44	2072	65
26-May-12	13:00	Cloudy	002958	2.7703	2.9286	16003.43	16027.43	24.00	1.44	1.44	1.44	2070	76

\* Due to lack of electricity supply, the 24 hr-TSP was rescheduled from 8 and 25 May 2012 to 9 and 26 May 2012

Report on 1-hour TSP monitoring

Action Level ( $\mu\text{g}/\text{m}^3$ ) - 332  
Limit Level ( $\mu\text{g}/\text{m}^3$ ) - 500

Date	Sampling Time	Weather Condition	Filter paper no.	Filter Weight, g		Elapse Time, hr		Sampling Time, hr	Flow Rate, $\text{m}^3/\text{min}$			Total Volume, $\text{m}^3$	TSP Level, $\mu\text{g}/\text{m}^3$
				Initial	Final	Initial	Final		Initial, $Q_{si}$	Final, $Q_{sf}$	Average		
3-May-12	9:38	Cloudy	002679	2.7866	2.7990	15907.47	15908.47	1.00	1.35	1.24	1.30	78	159
3-May-12	10:38	Cloudy	002580	2.7603	2.7712	15908.47	15909.47	1.00	1.43	1.43	1.43	86	127
3-May-12	13:30	Cloudy	002760	2.7538	2.7629	15909.47	15910.47	1.00	1.46	1.46	1.46	88	104
9-May-12	8:10	Sunny	002695	2.7671	2.7725	15913.94	15914.94	1.00	1.46	1.46	1.46	88	62
9-May-12	9:15	Sunny	002696	2.7631	2.7699	15914.94	15915.94	1.00	1.46	1.46	1.46	88	78
9-May-12	10:20	Sunny	002702	2.7810	2.7872	15915.95	15916.95	1.00	1.46	1.46	1.46	88	71
15-May-12	8:30	Cloudy	002700	2.7662	2.7820	15964.94	15965.94	1.00	1.46	1.46	1.46	88	180
15-May-12	9:33	Cloudy	002784	2.7992	2.8093	15965.94	15966.94	1.00	1.46	1.46	1.46	88	115
15-May-12	10:40	Cloudy	002786	2.7947	2.8017	15966.94	15967.94	1.00	1.46	1.46	1.46	88	80
21-May-12	8:40	Cloudy	002840	2.7773	2.7820	15991.70	15992.70	1.00	1.47	1.47	1.47	88	53
21-May-12	10:50	Cloudy	002835	2.7753	2.7836	15992.70	15993.70	1.00	1.41	1.44	1.43	86	97
21-May-12	13:00	Cloudy	002831	2.7897	2.7985	15993.70	15994.70	1.00	1.47	1.47	1.47	88	100
26-May-12	8:45	Cloudy	002953	2.7732	2.7862	16000.43	16001.43	1.00	1.47	1.47	1.47	88	148
26-May-12	9:48	Cloudy	002955	2.7803	2.7895	16001.43	16002.43	1.00	1.30	1.30	1.30	78	118
26-May-12	10:50	Cloudy	002957	2.7934	2.8044	16002.43	16003.43	1.00	1.47	1.47	1.47	88	125



Location: CMA6a - WD2 PRE Office

Report on 24-hour TSP monitoring

Action Level - 187.3  $\mu\text{g}/\text{m}^3$

Limit Level - 260  $\mu\text{g}/\text{m}^3$

Date	Sampling Time	Weather Condition	Filter paper no.	Filter Weight, g		Elapse Time, hr		Sampling Time, hr	Flow Rate, $\text{m}^3/\text{min}$			Total Volume, $\text{m}^3$	TSP Level, $\mu\text{g}/\text{m}^3$
				Initial	Final	Initial	Final		Initial, $Q_{si}$	Final, $Q_{sf}$	Average		
2-May-12	8:00	Cloudy	002808	2.7180	2.8180	14208.77	14232.78	24.01	1.32	1.34	1.33	1919	52
9-May-12	8:00	Sunny	002732	2.8078	2.8714	14238.79	14262.79	24.00	1.49	1.52	1.51	2170	29
14-May-12	8:00	Sunny	002583	2.7621	2.8317	14262.79	14286.79	24.00	1.52	1.52	1.52	2189	32
19-May-12	8:00	Cloudy	002866	2.7699	2.8482	14289.79	14313.79	24.00	1.50	1.50	1.50	2157	36
26-May-12	13:00	Cloudy	002959	2.7661	2.8553	14319.79	14343.79	24.00	1.22	1.22	1.22	1763	51

\* Due to lack of electricity supply, the 24 hr-TSP was rescheduled from 8 and 25 May 2012 to 9 and 26 May 2012

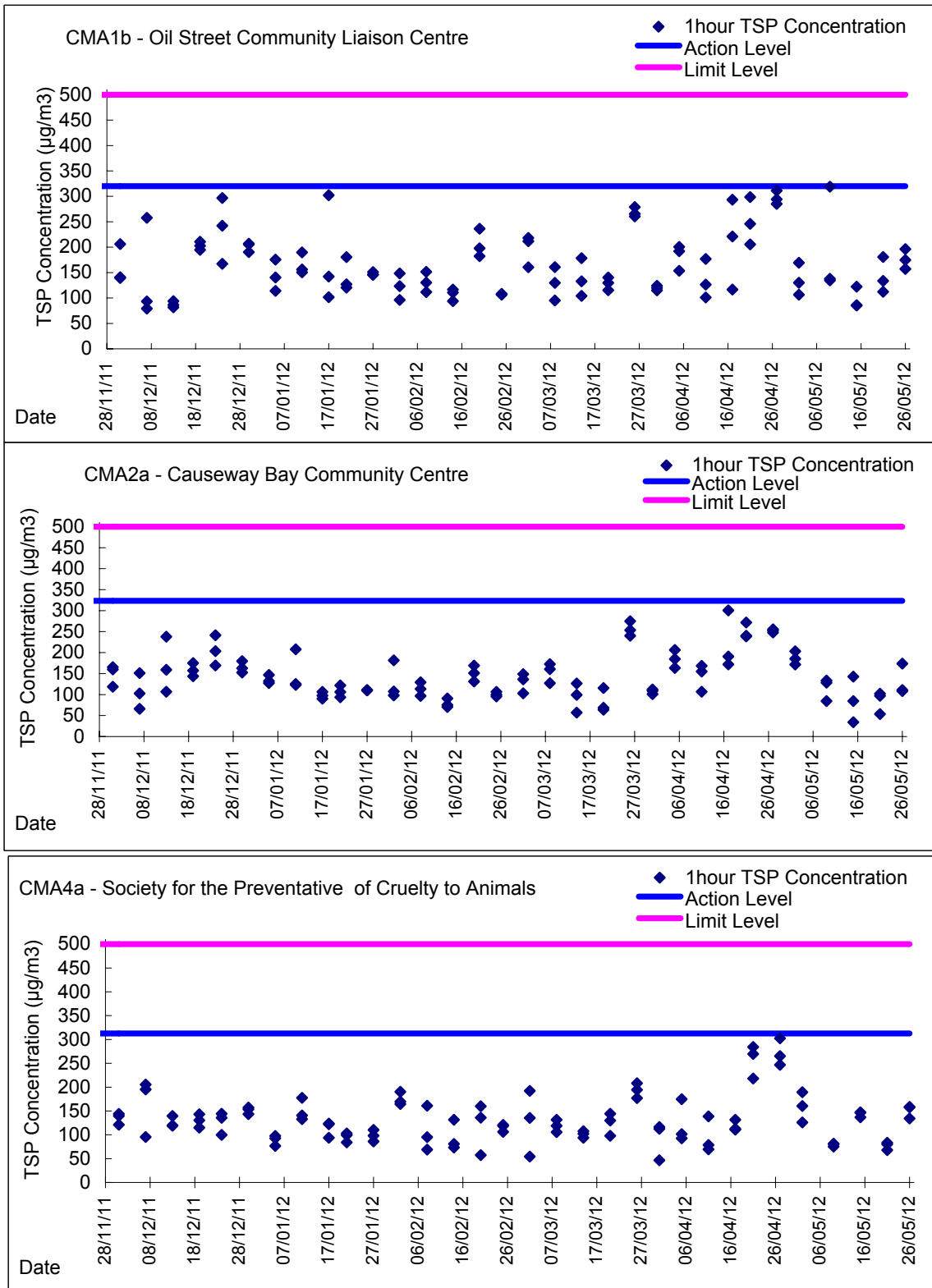
Report on 1-hour TSP monitoring

Action Level - 300.1  $\mu\text{g}/\text{m}^3$

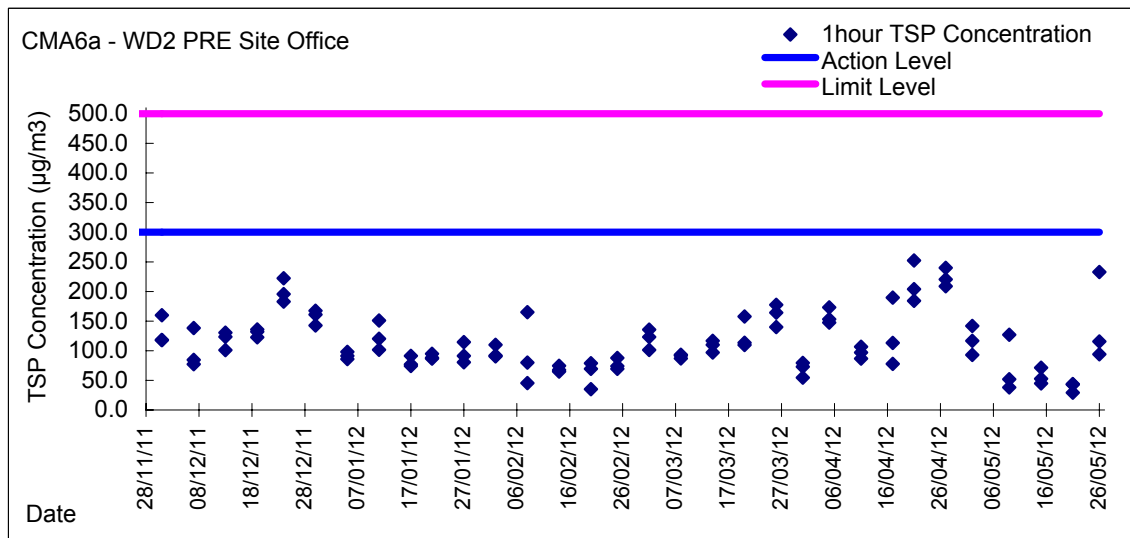
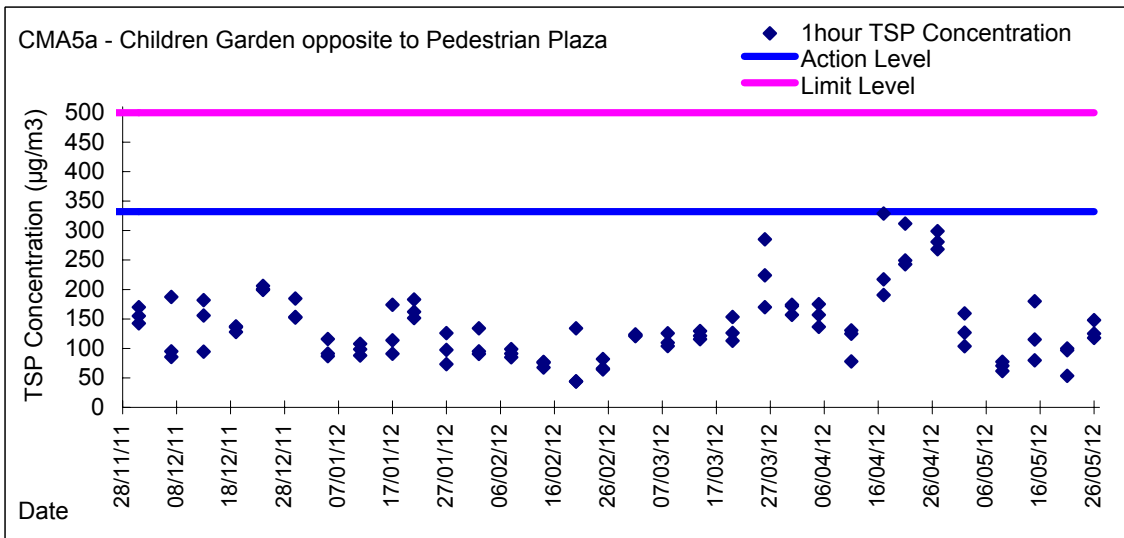
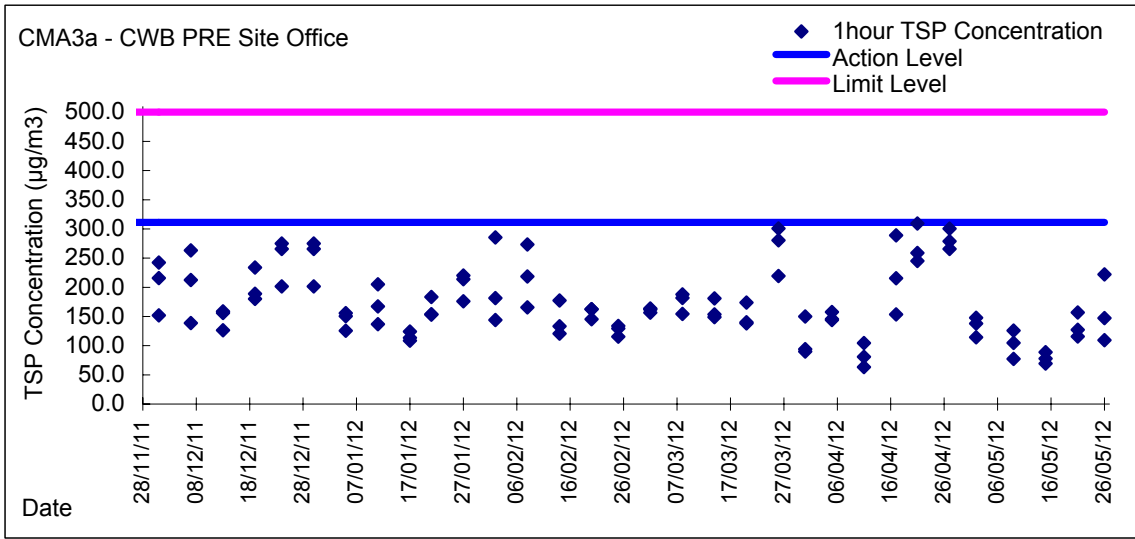
Limit Level - 500  $\mu\text{g}/\text{m}^3$

Date	Sampling Time	Weather Condition	Filter paper no.	Filter Weight, g		Elapse Time, hr		Sampling Time, hr	Flow Rate, $\text{m}^3/\text{min}$			Total Volume, $\text{m}^3$	TSP Level, $\mu\text{g}/\text{m}^3$
				Initial	Final	Initial	Final		Initial, $Q_{si}$	Final, $Q_{sf}$	Average		
3-May-12	9:00	Cloudy	002680	2.7933	2.8041	14232.78	14233.78	1.00	1.27	1.27	1.27	76	142
3-May-12	10:00	Cloudy	002673	2.7728	2.7817	14233.78	14234.78	1.00	1.27	1.27	1.27	76	117
3-May-12	13:10	Cloudy	002324	2.8048	2.8125	14234.78	14235.78	1.00	1.37	1.39	1.38	83	93
9-May-12	8:35	Sunny	002759	2.7286	2.7379	14235.79	14236.79	1.00	1.22	1.22	1.22	73	127
9-May-12	9:40	Sunny	002697	2.7697	2.7725	14236.79	14237.79	1.00	1.22	1.22	1.22	73	38
9-May-12	10:45	Sunny	002698	2.7597	2.7635	14237.79	14238.79	1.00	1.22	1.22	1.22	73	52
15-May-12	8:40	Cloudy	002783	2.8025	2.8090	14286.79	14287.79	1.00	1.52	1.52	1.52	91	71
15-May-12	9:43	Cloudy	002785	2.7968	2.8016	14287.79	14288.79	1.00	1.52	1.52	1.52	91	53
15-May-12	10:50	Cloudy	002787	2.8132	2.8173	14288.79	14289.79	1.00	1.52	1.52	1.52	91	45
21-May-12	8:27	Cloudy	002841	2.7743	2.7783	14313.79	14314.79	1.00	1.52	1.52	1.52	91	44
21-May-12	9:34	Cloudy	002838	2.7804	2.7830	14314.79	14315.79	1.00	1.47	1.50	1.49	89	29
21-May-12	10:38	Cloudy	002836	2.7613	2.7651	14315.79	14316.79	1.00	1.47	1.47	1.47	88	43
26-May-12	8:00	Cloudy	002833	2.7819	2.7990	14316.79	14317.79	1.00	1.22	1.22	1.22	73	233
26-May-12	9:10	Cloudy	002954	2.7622	2.7691	14317.79	14318.79	1.00	1.22	1.22	1.22	73	94
26-May-12	10:30	Cloudy	002956	2.7849	2.7934	14318.79	14319.79	1.00	1.22	1.22	1.22	73	116

Graphic Presentation of 1 hour TSP Result

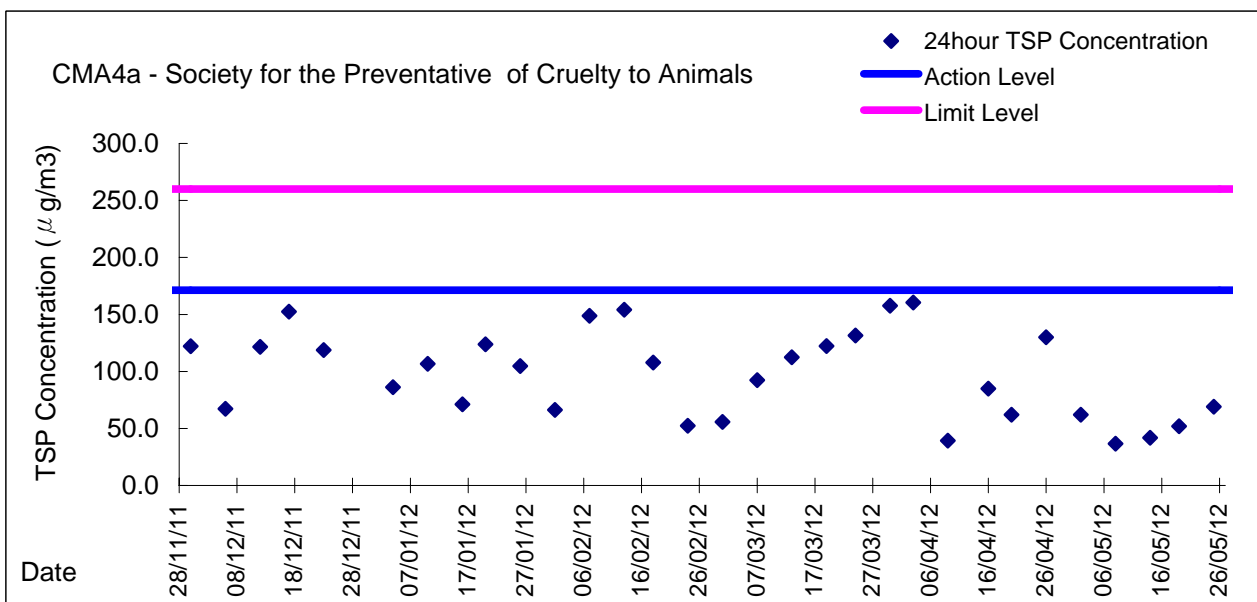
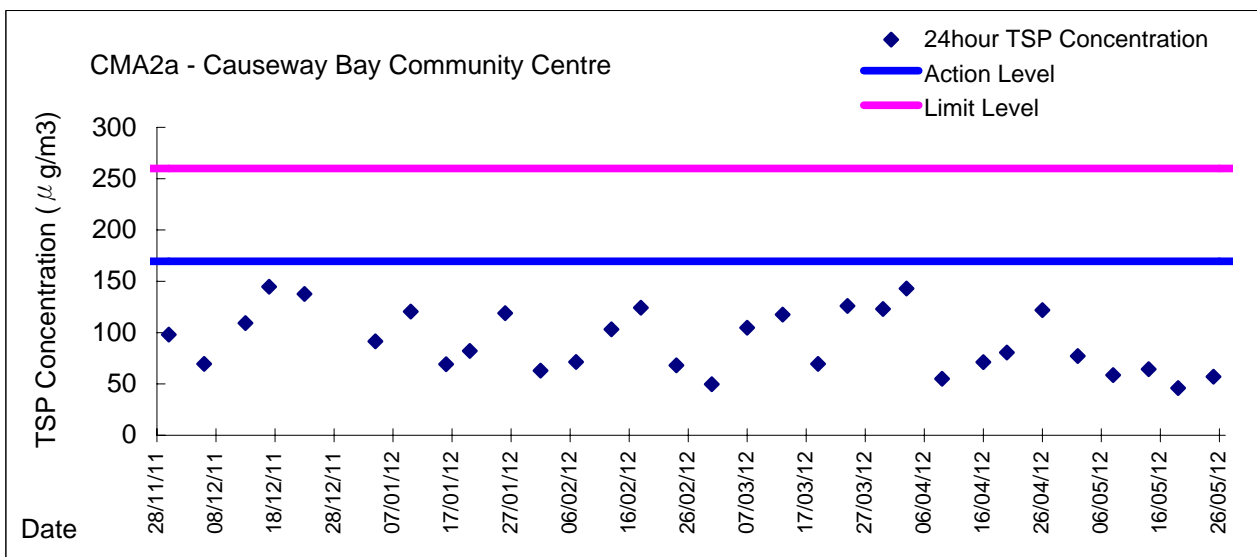
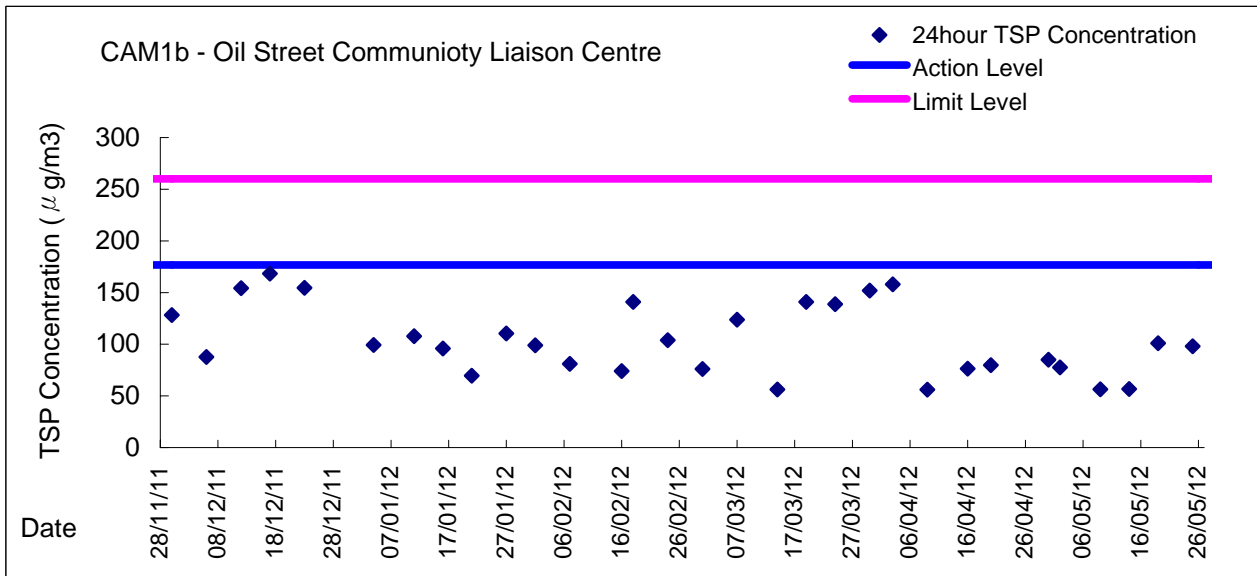


Graphic Presentation of 1 hour TSP Result





**Graphic Presentation of 24 hour TSP Result**





Graphic Presentation of 24 hour TSP Result

